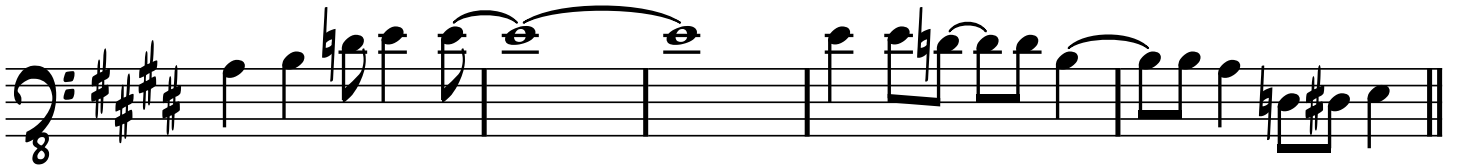
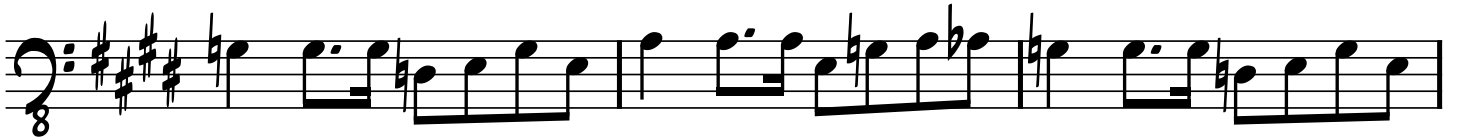


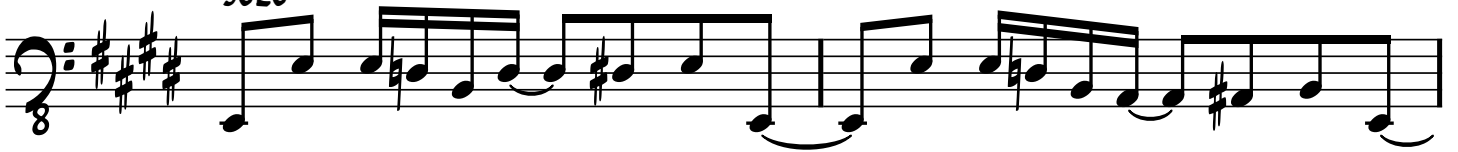




CHORUS



SOLO



VERSE 3

The first two staves of the Verse 3 section. The first staff begins with a key signature of three sharps (F#, C#, G#) and a common time signature. The melody consists of eighth and quarter notes. The second staff continues the melody with some notes marked with accents and includes a repeat sign at the end.

CHORUS

The seven staves of the Chorus section. The first staff starts with a key signature change to two sharps (F#, C#) and a common time signature. It includes a repeat sign and a double bar line. The subsequent staves feature a mix of eighth, quarter, and half notes, with some notes tied across measures. The final staff concludes with a double bar line and a fermata over the final note.