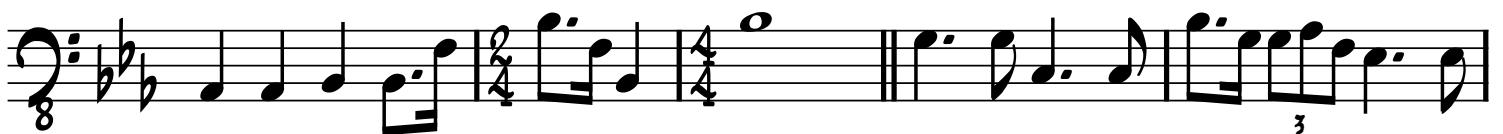
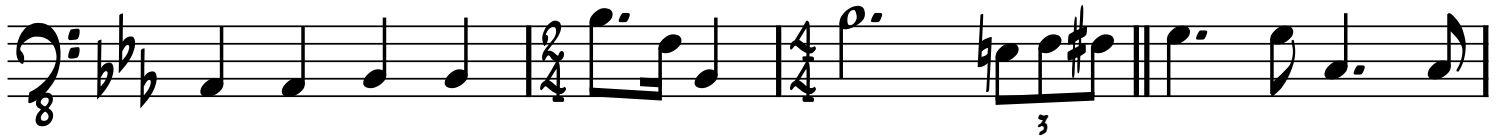
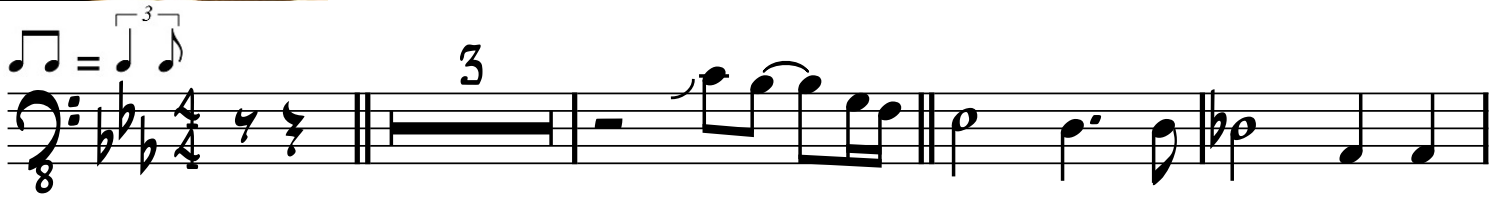




# Killer Queen

BRITISH MUSIC WRITERS COUNCIL  
TOM READ  
MUSICIANS' UNION 4827

Bass



GUITAR SOLO

First staff of music, bass clef, key signature of two flats, 8/8 time signature. It begins with a double bar line, followed by a series of eighth and quarter notes, ending with a repeat sign.

Second staff of music, bass clef, key signature of two flats, 8/8 time signature. It continues the melodic line with eighth and quarter notes, ending with a repeat sign.

Third staff of music, bass clef, key signature of two flats, 8/8 time signature. It features a triplet of eighth notes, followed by eighth and quarter notes, ending with a repeat sign.

Fourth staff of music, bass clef, key signature of two flats, 8/8 time signature. It includes a change to 2/4 time signature and features eighth and quarter notes, ending with a repeat sign.

Fifth staff of music, bass clef, key signature of two flats, 8/8 time signature. It continues with eighth and quarter notes, ending with a repeat sign.

Sixth staff of music, bass clef, key signature of two flats, 8/8 time signature. It features eighth and quarter notes, with triplet markings under the eighth notes, ending with a repeat sign.

Seventh staff of music, bass clef, key signature of two flats, 8/8 time signature. It includes a change to 2/4 time signature and features eighth and quarter notes, ending with a repeat sign.

Eighth staff of music, bass clef, key signature of two flats, 8/8 time signature. It continues with eighth and quarter notes, ending with a repeat sign.

REPEAT TO FADE

Ninth staff of music, bass clef, key signature of two flats, 8/8 time signature. It begins with a repeat sign, followed by eighth and quarter notes, and ends with a double bar line and repeat sign.